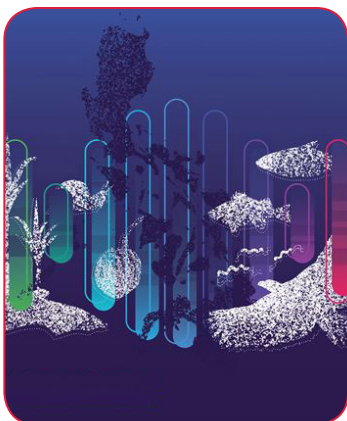

About the Cover



This special issue's cover is accompanied by the different species covered by the studies in this journal. With contributions from all over the Philippines, the Philippine map signifies the collective efforts of Filipino scientists in the continuous revolution of 'omics' research in the country. Interspersed with the Philippine flora and fauna, the colorful depiction of the DNA strand highlights the collaborative research among different institutions to explore and protect the genome of the Philippines.

Cover Design by Cristel Hannah C. Cruz

Editorial Staff

Allyster A. Endozo
Managing Editor

David Matthew C. Gopilan
Editorial Assistant

Mario B. Buarao, Jr.
Production Editor

Allan Mauro V. Marfal
Printing Press Supervisor

Ferdinand D. Cartas
Circulation Staff

Framelia V. Anonas
Unit Head, CDEU

Mona Carina E. Montevirgen
Officer-In-Charge, CRPD

Subscription Information

The Philippine Journal of Science is a quarterly scientific publication under SCOPUS coverage published by the Department of Science and Technology (DOST) and managed by the Science and Technology Information Institute – Communication Resources and Production Division (STII-CRPD). PJS can be accessed online through <http://philjournalsci.dost.gov.ph>



For subscription request or inquiries, you can contact:

The Circulation Staff
Science and Technology Information Institute
DOST Complex, General Santos Avenue
Bicutan, Taguig City, Metro Manila, Philippines
Phone: (632) 837-2071 to 82; Locals: 2146 & 2148

Author's guide for writing the manuscripts can be found on pages 297–299. Manuscripts can be submitted to the editorial office at the following address:

The Editorial Staff
Science and Technology Information Institute
DOST Complex, General Santos Avenue
Bicutan, Taguig City, Metro Manila, Philippines
Phone: (632) 837 2071 to 82 locals 2148
Fax: (632) 837 7520
E-mail: philjournalsci@gmail.com