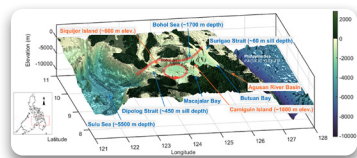


---

## About the Cover

---



The image shows a three-dimensional bathymetric map of Bohol Sea in the Philippines based on ocean data retrieved from the GEBCO Compilation Group. A study by Sihay and colleagues revealed that mixing, upwelling, and particle entrainment driven by strong winds during the northeast monsoon season enhances chlorophyll-*a* concentration across the area, particularly at the west side of Camiguin Island. This island wake phenomenon contributes to increased levels of phytoplankton biomass and resupplied nutrients on upper ocean layers, which translates to greater primary productivity that sustains food availability in marine ecosystems. To learn more, go to pages 169–178.

---

## Editorial Staff

---

**Allyster A. Endozo**  
*Managing Editor*

**Caryl Maria Minette I. Ulay**  
*Editorial Assistant*

**Mario B. Buarao Jr.**  
*Production Editor*

**Ferdinand D. Cartas**  
*Circulation Staff*

**Rodolfo P. de Guzman**  
*Chief, CRPD*

---

## Subscription Information

---

The Philippine Journal of Science is a bimonthly scientific publication under SCOPUS coverage published by the Department of Science and Technology (DOST) and managed by the Science and Technology Information Institute – Communication Resources and Production Division (STII-CRPD). PJS can be accessed online through <http://philjournalsci.dost.gov.ph>



For subscription request or inquiries, you can contact:

The Circulation Staff  
Science and Technology Information Institute  
DOST Complex, General Santos Avenue  
Bicutan, Taguig City, Metro Manila, Philippines  
Phone: (632) 8837-2071 to 82; local: 2146

Author's guide for writing the manuscripts can be found on pages 217–220. Manuscripts can be submitted to the editorial office at the following address:

The Editorial Staff  
Science and Technology Information Institute  
DOST Complex, General Santos Avenue  
Bicutan, Taguig City, Metro Manila, Philippines  
Phone: (632) 8837 2071 to 82 local 2146  
Fax: (632) 8837 7520  
E-mail: [philjournalsci@gmail.com](mailto:philjournalsci@gmail.com)