

Figure X. Non-type specimen of *Leucopholis coneophora* Burmeister, 1855: [A] habitus, dorsal aspect; [B] habitus, ventral aspect; [C] habitus, male genitalia lateral aspect (photographs courtesy of Dr. Bernd Jaeger of ZMHB).

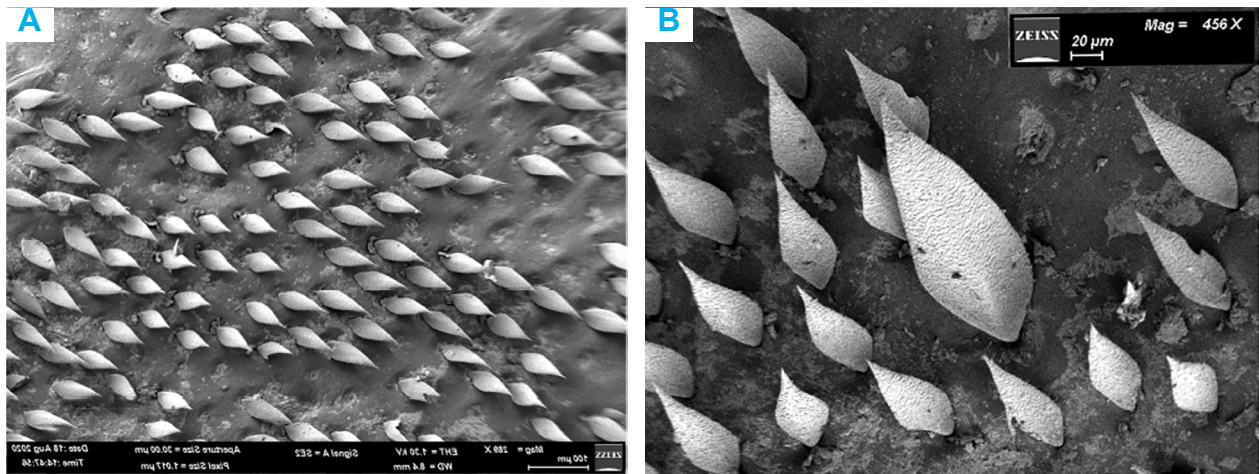


Figure XI. Elytral scales of *Leucopholis coneophora* Burmeister, 1855: [A] lower magnification; [B] higher magnification.

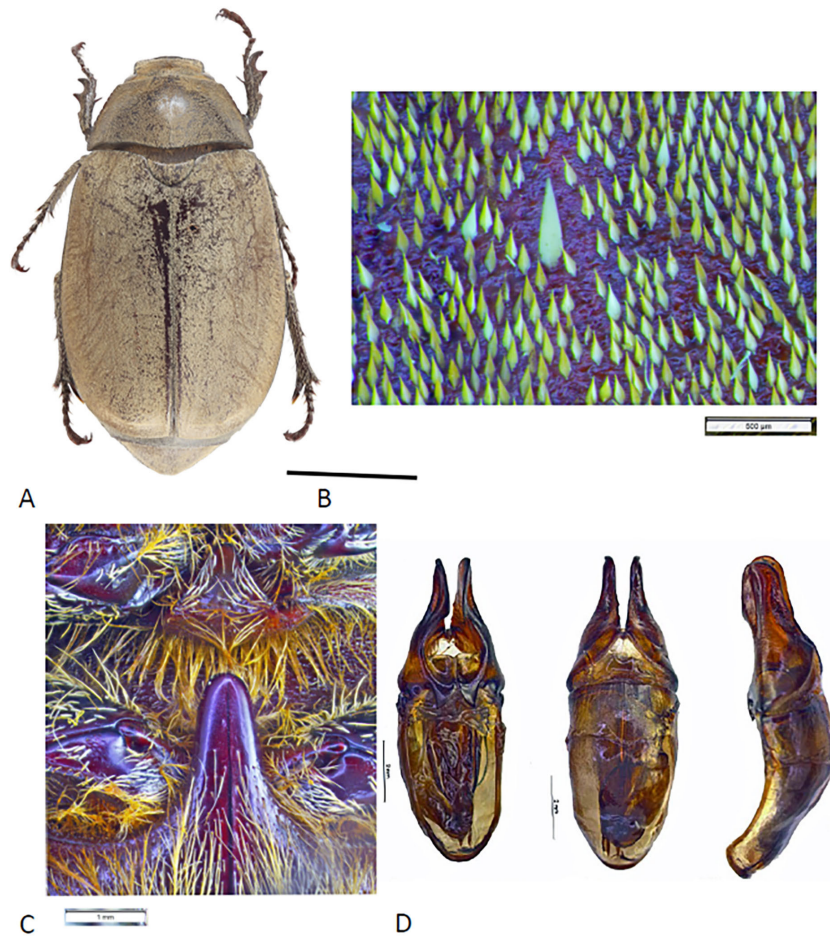


Figure XII. *Leucopholis burmeisteri* Brenske, 1894: [A] habitus, dorsal aspect; [B] elytral scales; [C] prosternal and metaventral processes; [D] male genitalia, ventral aspect, dorsal aspect, lateral aspect.

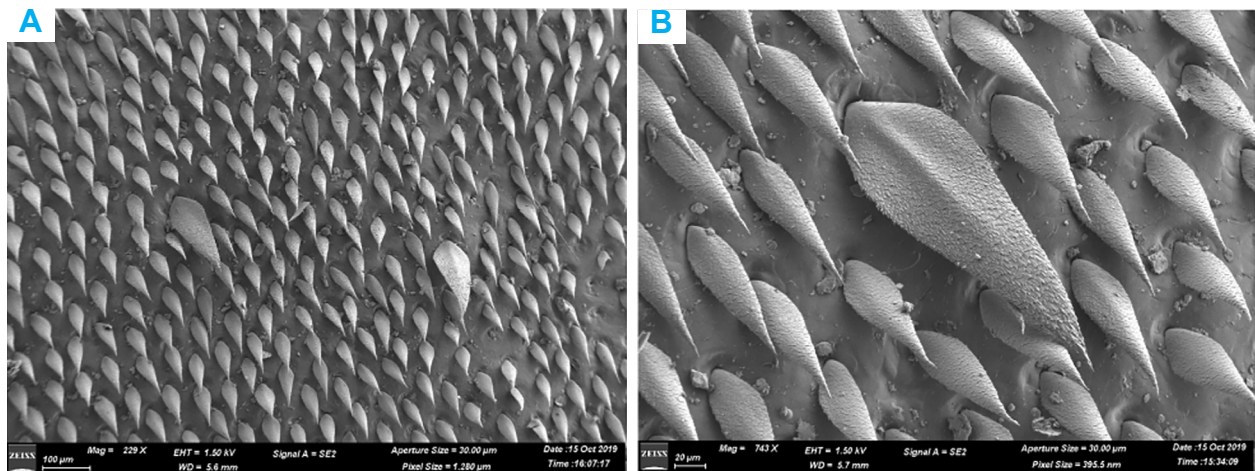


Figure XIII. Elytral scales of *Leucopholis burmeisteri* Brenske, 1894: [A] lower magnification; [B] higher magnification.

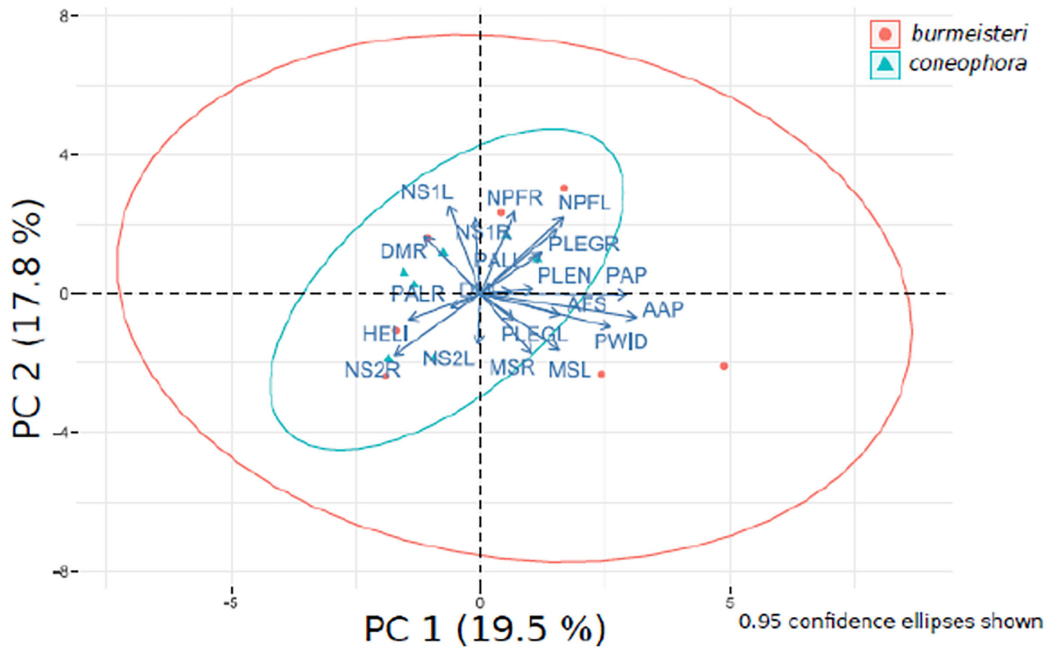


Figure XIV. Principal component analysis (PCA) of the morphological character of *Leucopholis burmeisteri* and *L. coneophora* adults.