

Figure I. Geographic distribution of *Leucopholis* spp. in south India.



Figure II. [A] Areca nut (*Areca catechu* L.) plantation in south India; [B] white grubs larvae feeding on roots of the tree.



A

B



C

Figure III. [A] Roots of areca nut (*Areca catechu* L.) damaged by white grubs in south India; [B] leaves of the tree showing yellowing of leaves symptom; [C] adult beetles mating.

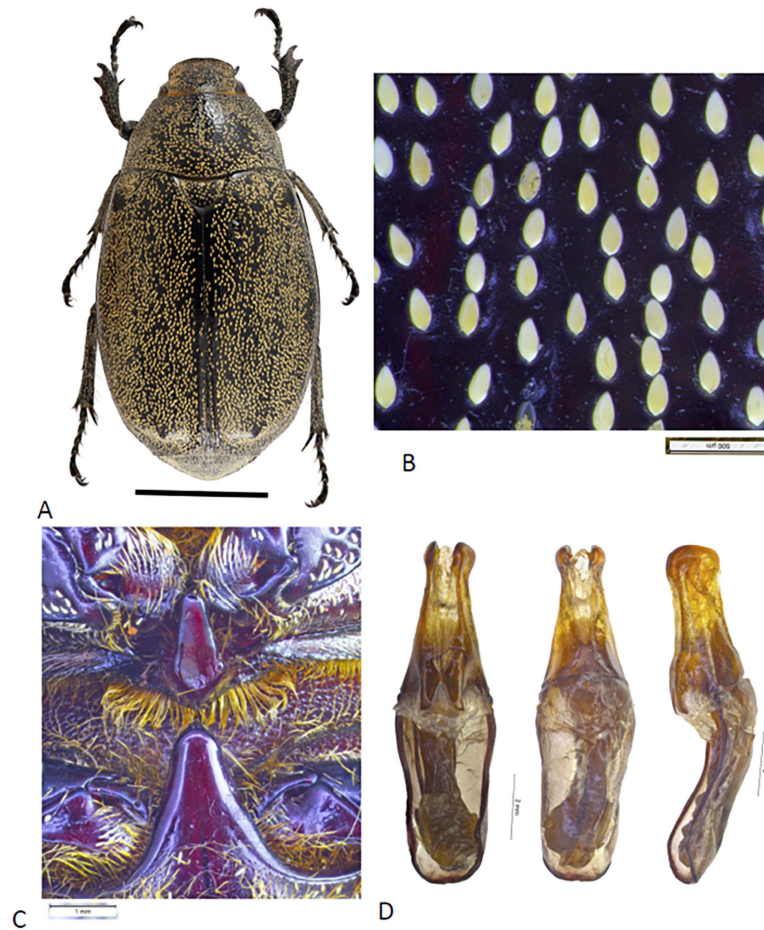


Figure IV. *Leucopholis lepidophora* Blanchard, 1851: [A] habitus, dorsal view (male); [B] habitus, elytral scales; [C] habitus, prosteral and metaveral processes; [D] habitus, male genitalia, habitus, ventral aspect, dorsal aspect, lateral aspect.

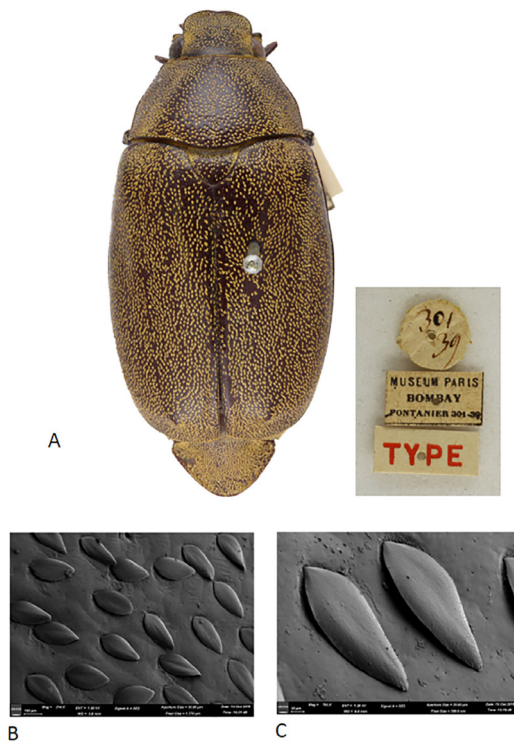


Figure V. Syntype specimen of *Leucopholis lepidophora* Blanchard, 1851: [A] habitus, dorsal view (male) (photographs courtesy of Dr. Olivier Montreuil of MNHN); [B] SEM of elytral scales, lower magnification; [C] higher magnification.

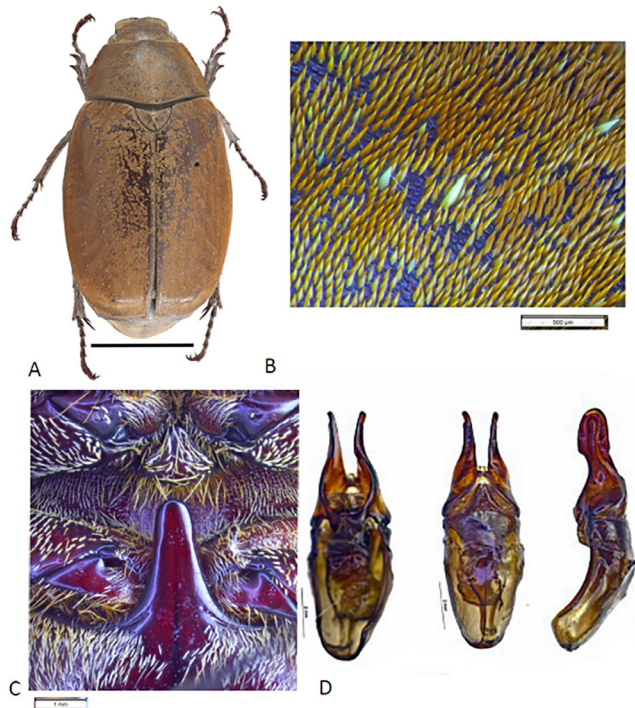


Figure VI. *Leucopholis coneophora* Burmeister, 1855: [A] habitus, dorsal view (male); [B] elytral scales; [C] prosternal and metaveral processes; [D] habitus, male genitalia, ventral aspect, dorsal aspect, lateral aspect.

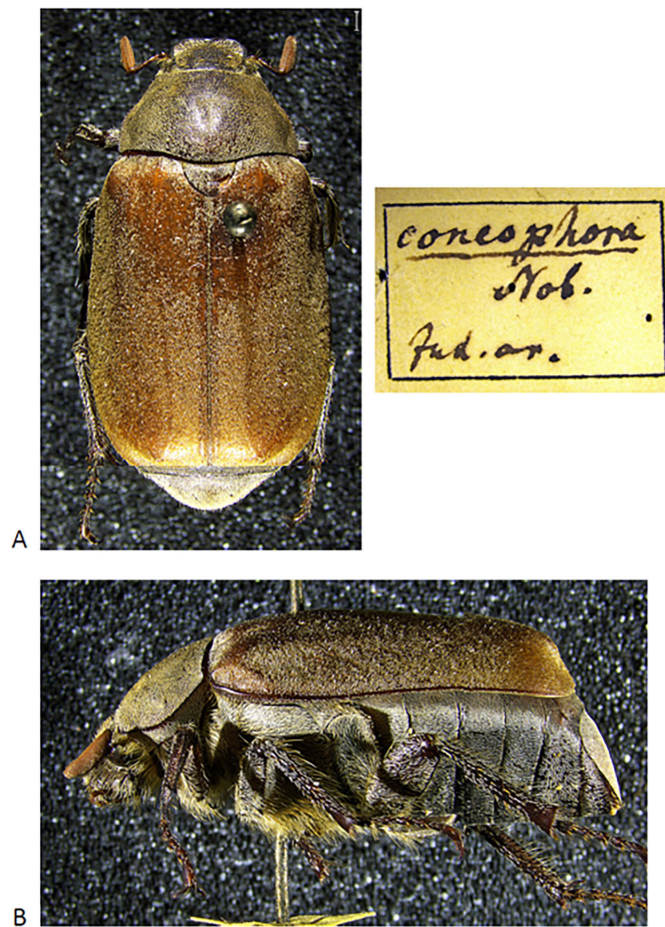


Figure VII. Type of *Leucopholis coneophora* Burmeister, 1855: [A] habitus, dorsal aspect; [B] habitus, lateral aspect (photographs courtesy of Dr. Hendrik Mueller of MLU, Halle, Germany).

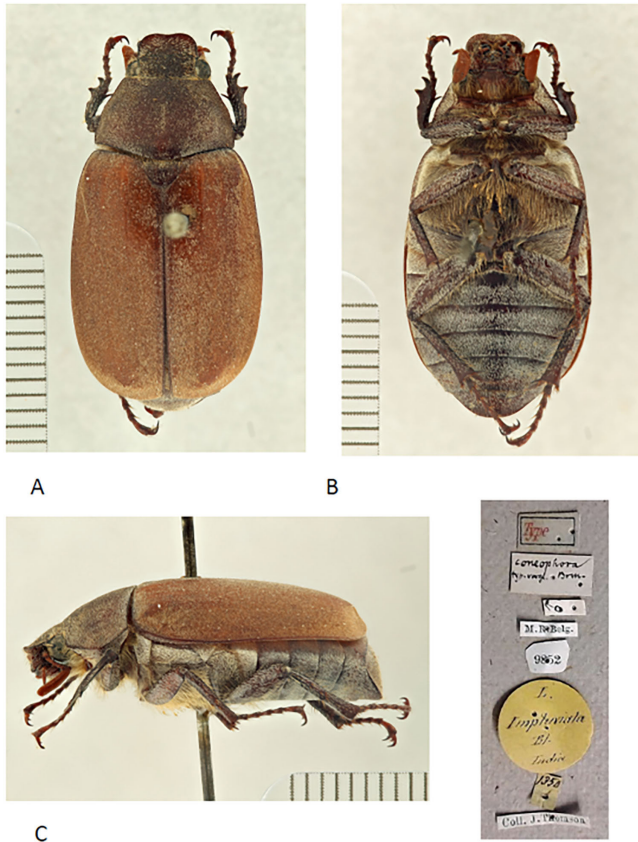


Figure VIII. Non-type of *Leucopholis coneophora* Burmeister, 1855 examined by Brenske (1894): [A] habitus, dorsal aspect; [B] habitus, ventral aspect; [C] habitus, lateral aspect (photographs courtesy of Dr. Alain Drumont and Julien Lalanne of RBINS, Brussels, Belgium).



Figure IX. Non-type of *Leucopholis coneophora* Burmeister, 1855: [A] habitus, male genitalia, dorsal aspect; [B] habitus, male genitalia, lateral aspect (photographs courtesy of Dr. Alain Drumont and Julien Lalanne of RBINS, Brussels, Belgium).