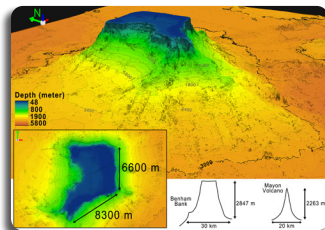

About the Cover



The image shows a 3D visualization of the Benham Bank, a thick carbonate bank on Philippines Rise, west Pacific. This seamount is defined by a flat summit, scalloped margins, and almost vertical upper slopes. This unique morphology is attributed to the long-term growth of carbonate framework materials on top of a now highly eroded and concealed Benham volcanic edifice. To learn more, go to pages 2303–2314.

Editorial Staff

Allyster A. Endozo
Managing Editor

Caryl Maria Minette I. Ulay
Editorial Assistant

Mario B. Buarao Jr.
Production Editor

Ferdinand D. Cartas
Circulation Staff

Rodolfo P. de Guzman
Officer-in-Charge, CRPD
Head, CDES

Subscription Information

The Philippine Journal of Science is a bimonthly scientific publication under SCOPUS coverage published by the Department of Science and Technology (DOST) and managed by the Science and Technology Information Institute – Communication Resources and Production Division (STII-CRPD). PJS can be accessed online through <https://philjournalsci.dost.gov.ph>



For subscription request or inquiries, you can contact:

The Circulation Staff
Science and Technology Information Institute
DOST Complex, General Santos Avenue
Bicutan, Taguig City, Metro Manila, Philippines
Mobile Phone: 09239582403 / 09062540103

Author's guide for writing the manuscripts can be found on pages ???–???. Manuscripts can be submitted to the editorial office at the following address:

The Editorial Staff
Science and Technology Information Institute
DOST Complex, General Santos Avenue
Bicutan, Taguig City, Metro Manila, Philippines
Phone: (632) 837 2071 to 82 local 2146
Fax: (632) 837 7520
E-mail: philjournalsci@gmail.com