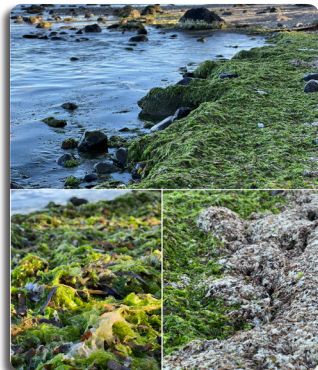

About the Cover



The image shows mats of *Ulva*—a species of green seaweed with a wide range of commercial uses—that drifted toward a coastal area of Bulusan in Sorsogon, the Philippines. *Ulva* presents a promising opportunity for fisherfolks to diversify their income streams and reduce their reliance on fishing. A survey conducted by Dumilag and colleagues revealed that most Bulusanon fisherfolks were knowledgeable about *Ulva* resources and were willing to farm it. They were, however, found to be reluctant to learn, invest, or spend time doing so, as it requires different skill sets and presents challenges associated with marketing. This study provides valuable insights into the development of targeted interventions to promote the adoption of *Ulva* farming in the region. To learn more, go to pages 2267-2272.

Editorial Staff

Allyster A. Endozo
Managing Editor

Caryl Maria Minette I. Ulay
Editorial Assistant

Mario B. Buarao Jr.
Production Editor

Ferdinand D. Cartas
Circulation Staff

Rodolfo P. de Guzman
Officer-in-Charge, CRPD
Head, CDES

Subscription Information

The Philippine Journal of Science is a bimonthly scientific publication under SCOPUS coverage published by the Department of Science and Technology (DOST) and managed by the Science and Technology Information Institute – Communication Resources and Production Division (STII-CRPD). PJS can be accessed online through <https://philjournalsci.dost.gov.ph>



For subscription request or inquiries, you can contact:

The Circulation Staff
Science and Technology Information Institute
DOST Complex, General Santos Avenue
Bicutan, Taguig City, Metro Manila, Philippines
Phone: (632) 837-2071 to 82

Author's guide for writing the manuscripts can be found on pages 2273–2276. Manuscripts can be submitted to the editorial office at the following address:

The Editorital Staff
Science and Technology Information Institute
DOST Complex, General Santos Avenue
Bicutan, Taguig City, Metro Manila, Philippines
Phone: (632) 837 2071 to 82
Fax: (632) 837 7520
E-mail: philjournalsci@gmail.com