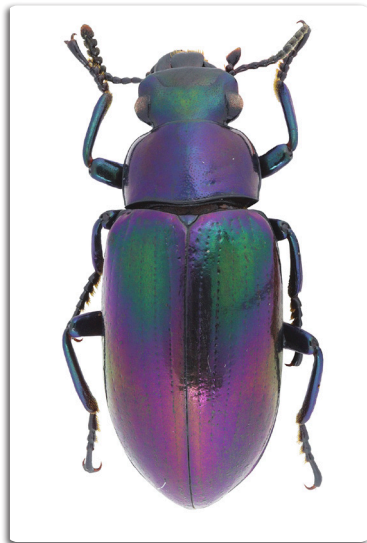

About the Cover



The image shows a sample specimen of *Gauromaia dorsu*, which—along with *Gauromaia purpurea*—constitutes two new species of the Darkling beetle under the genus *Gauromaia*. The specimens were collected from *Barangay Eureka* in Gingoog City, Misamis Oriental, and around Lake Holon in T’Boli, South Cotabato. In total, seven species of *Gauromaia* are distributed in the Philippine archipelago, five of which are known on Mindanao Island. To learn more, go to pages 1189–1196.

Editorial Staff

Allyster A. Endozo
Managing Editor

Caryl Maria Minette I. Ulay
Editorial Assistant

Mario B. Buarao Jr.
Production Editor

Ferdinand D. Cartas
Circulation Staff

Rodolfo P. de Guzman
Officer-in-Charge, CRPD
Head, CDES

Subscription Information

The Philippine Journal of Science is a bimonthly scientific publication under SCOPUS coverage published by the Department of Science and Technology (DOST) and managed by the Science and Technology Information Institute – Communication Resources and Production Division (STII-CRPD). PJS can be accessed online through <https://philjournalsci.dost.gov.ph>



For subscription request or inquiries, you can contact:

The Circulation Staff
Science and Technology Information Institute
DOST Complex, General Santos Avenue
Bicutan, Taguig City, Metro Manila, Philippines
Phone: (632) 837-2071 to 82; local: 2146

Author’s guide for writing the manuscripts can be found on pages 1261–1264. Manuscripts can be submitted to the editorial office at the following address:

The Editorial Staff
Science and Technology Information Institute
DOST Complex, General Santos Avenue
Bicutan, Taguig City, Metro Manila, Philippines
Phone: (632) 837 2071 to 82 local 2146
Fax: (632) 837 7520
E-mail: philjournalsci@gmail.com