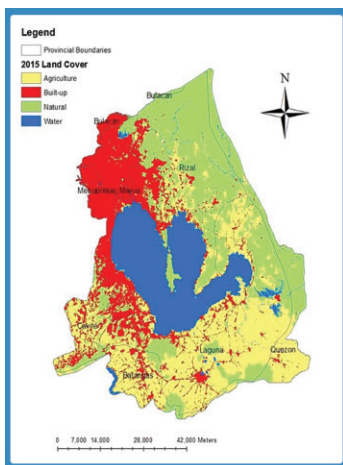

About the Cover



The photo shows a harmonized land cover map of the Laguna Lake Basin in Luzon Island, Philippines in the year 2015. Substantial urban expansion *i.e.*, the conversion of agricultural and natural land cover to built-up land, had taken place since 2003. Assuming “business-as-usual” conditions, this would likely extend southward to the provinces of Cavite, Batangas, and Laguna and eastward to Rizal through 2050. This poses a risk to supply security, both in quality and quantity, of the water bodies near these areas. The study recommends the continued implementation of integrated watershed management and the development of more transboundary management policies. To learn more, go to page 715–731.

Editorial Staff

Allyster A. Endozo
Managing Editor

David Matthew C. Gopilan
Editorial Assistant

Mario B. Buarao, Jr.
Production Editor

Allan Mauro V. Marfal
Printing Press Supervisor

Ferdinand D. Cartas
Circulation Staff

Framelia V. Anonas
Unit Head, CDEU

Mona Carina E. Montevirgen
Officer-in-Charge, CRPD

Subscription Information

The Philippine Journal of Science is a quarterly scientific publication under SCOPUS coverage published by the Department of Science and Technology (DOST) and managed by the Science and Technology Information Institute – Communication Resources and Production Division (STII-CRPD). PJS can be accessed online through <http://philjournalsci.dost.gov.ph>

For subscription request or inquiries, you can contact:

The Circulation Staff
Science and Technology Information Institute
DOST Complex, General Santos Avenue
Bicutan, Taguig City, Metro Manila, Philippines
Phone: (632) 837-2071 to 82; Locals: 2146 & 2148

Author’s guide for writing the manuscripts can be found on pages 845–847. Manuscripts can be submitted to the editorial office at the following address:

The Editorital Staff
Science and Technology Information Institute
DOST Complex, General Santos Avenue
Bicutan, Taguig City, Metro Manila, Philippines
Phone: (632) 837 2071 to 82 locals 2148
Fax: (632) 837 7520
E-mail: philjournalsci@gmail.com

