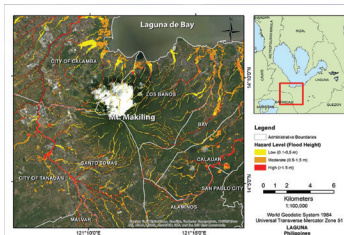


---

## About the Cover

---



The photo shows a FLO-2D flood hazard map for Mount Makiling from the Agromet station in UP Los Baños, Laguna, Philippines. The map indicates significant flooding along tributaries to the east and along coastal areas at the foot of Mt. Makiling during the height of Tropical Storm Ketsana (local name: “Ondoy”) on 26-27 Sep 2009. Readings from the Agromet station were found to be more accurate, as it registered coarse rainfall distribution of 182.3 mm compared to 129.92 mm generated from the Weather Research and Forecasting (WRF) model. For countries like the Philippines where the density of meteorological observation stations is lacking, the WRF model can provide rainfall distribution of a study area for use in hazards monitoring and modelling. The FLO-2D model can then utilize this rainfall data, in the absence of rainfall gauges or records in the study area, to simulate flood hazards that can possibly affect floodplains and other low-lying area. To learn more, go to page 463-471.

---

## Editorial Staff

---

**Allyster A. Endozo**  
*Managing Editor*

**David Matthew C. Gopilan**  
*Editorial Assistant*

**Mario B. Buarao, Jr.**  
*Production Editor*

**Allan Mauro V. Marfal**  
*Printing Press Supervisor*

**Ferdinand D. Cartas**  
*Circulation Staff*

**Framelia V. Anonas**  
*Unit Head, CDEU*

**Aristotle P. Carandang, Ph.D.**  
*Chief, CRPD*

---

## Subscription Information

---

The Philippine Journal of Science is a quarterly scientific publication under SCOPUS coverage published by the Department of Science and Technology (DOST) and managed by the Science and Technology Information Institute –



Communication Resources and Production Division (STII-CRPD). PJS can be accessed online through <http://philjournalsci.dost.gov.ph>

For subscription request or inquiries, you can contact:

The Circulation Staff  
Science and Technology Information Institute  
DOST Complex, General Santos Avenue  
Bicutan, Taguig City, Metro Manila, Philippines  
Phone: (632) 837-2071 to 82; Locals: 2142 & 2146

Author’s guide for writing the manuscripts can be found on pages 551-553. Manuscripts can be submitted to the editorial office at the following address:

The Editorial Staff  
Science and Technology Information Institute  
DOST Complex, General Santos Avenue  
Bicutan, Taguig City, Metro Manila, Philippines  
Phone: (632) 837 2191 to 95 locals 6 or 7  
(632) 837 2071 to 82 locals 2142  
Fax: (632) 837 7520  
E-mail: [philjournalsci@gmail.com](mailto:philjournalsci@gmail.com)