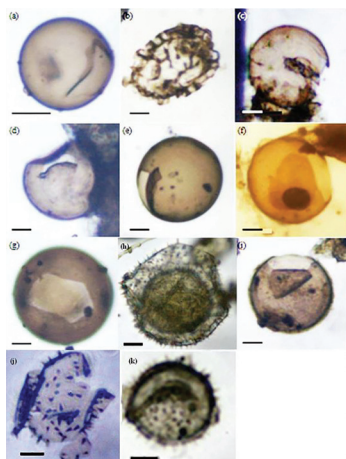

About the Cover



The photo shows light microscope images of heterotrophic dinoflagellate cysts in Cancabato Bay, Leyte, Philippines. Palynological processing of surface sediment samples revealed a total of 21 species belonging to five groups, with *Operculodinium centrocarpum* (*Protoceratium reticulatum*) predominating in four out of 17 stations. Cyst concentration ranging $1-80 \text{ g}^{-1} \text{ DW}$ peaked at the inner part of the bay, which could have been attributed to factors like bulk dry weight, nitrogen content, and substrate type. Cyst abundance and distribution, when factored in future models, could aid in predicting recurrent algal blooms and subsequently limit fish bans in the bay. To learn more, go to page 209-220.

Editorial Staff

Allyster A. Endozo
Managing Editor

David Matthew C. Gopilan
Editorial Assistant

Mario B. Buarao, Jr.
Production Editor

Allan Mauro V. Marfal
Printing Press Supervisor

Ferdinand D. Cartas
Circulation Staff

Framelia V. Anonas
Unit Head, CDEU

Aristotle P. Carandang, Ph.D.
Chief, CRPD

Subscription Information

The Philippine Journal of Science is a quarterly scientific publication under SCOPUS coverage published by the Department of Science and Technology (DOST) and managed by the Science and Technology Information Institute –

Communication Resources and Production Division (STII-CRPD). PJS can be accessed online through <http://philjournalsci.dost.gov.ph>

For subscription request or inquiries, you can contact:

The Circulation Staff
Science and Technology Information Institute
DOST Complex, General Santos Avenue
Bicutan, Taguig City, Metro Manila, Philippines
Phone: (632) 837-2071 to 82; Locals: 2142 & 2146

Author's guide for writing the manuscripts can be found on pages 343-345. Manuscripts can be submitted to the editorial office at the following address:

The Editorial Staff
Science and Technology Information Institute
DOST Complex, General Santos Avenue
Bicutan, Taguig City, Metro Manila, Philippines
Phone: (632) 837 2191 to 95 locals 6 or 7
(632) 837 2071 to 82 locals 2142
Fax: (632) 837 7520
E-mail: philjournalsci@gmail.com

